

Welcome to the US 119 Corridor Study Open House

*Please Sign In
&
Take a Comment Form!*

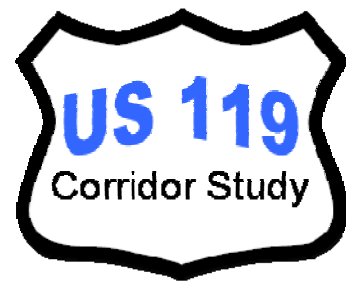


Meeting Purpose



- 1 Study Purpose / Limits
- 2 Existing Conditions
- 3 Project Issues
- 4 Preliminary Recommendations

Comment Form Instructions



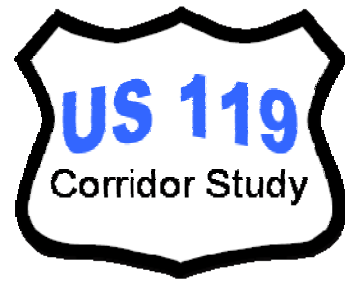
Please take a comment form at the sign-in table.

To make your comment form count, please do the following:

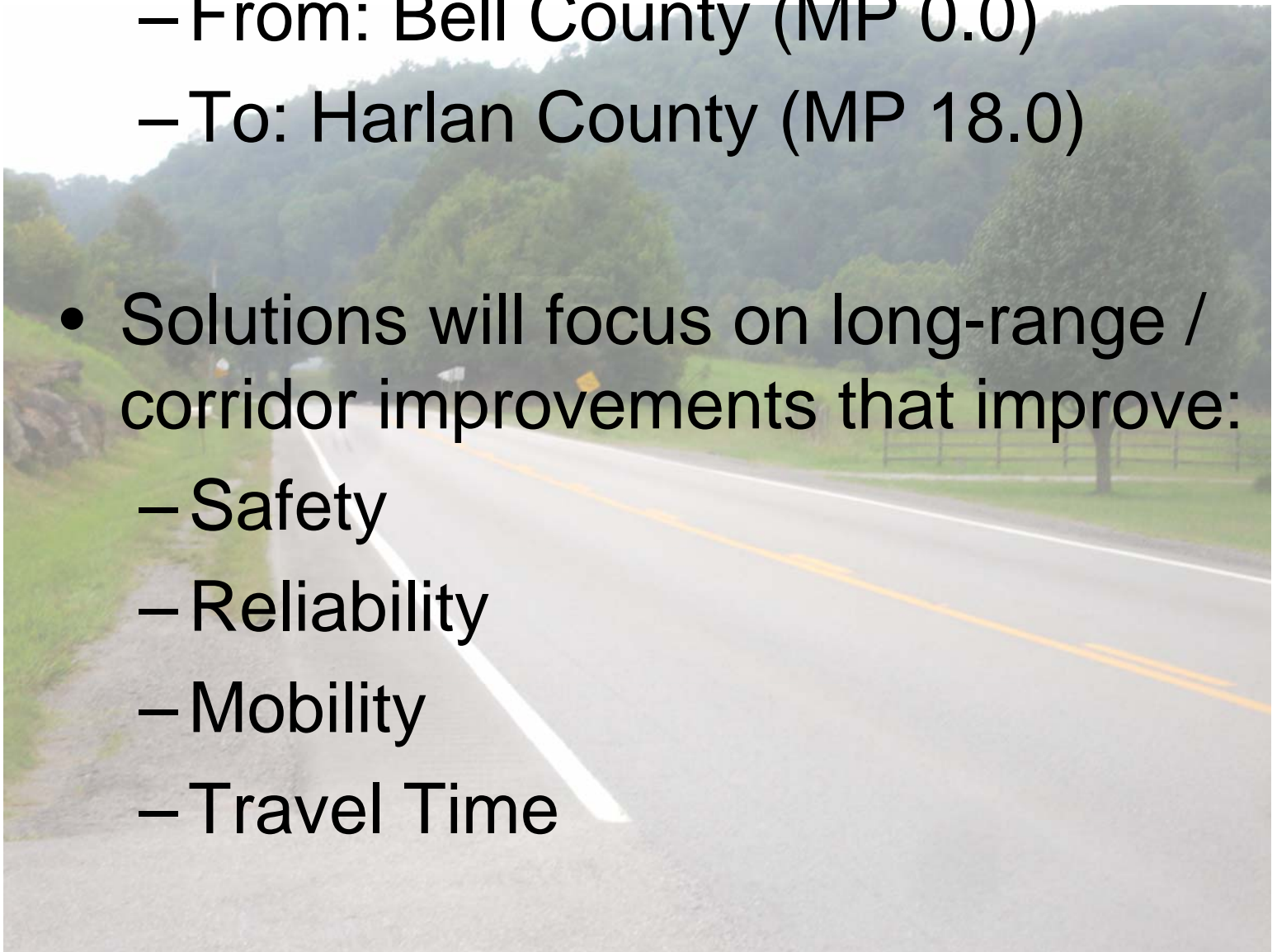
1) Fill in your name and address and sign the form on the **front** of the comment form.

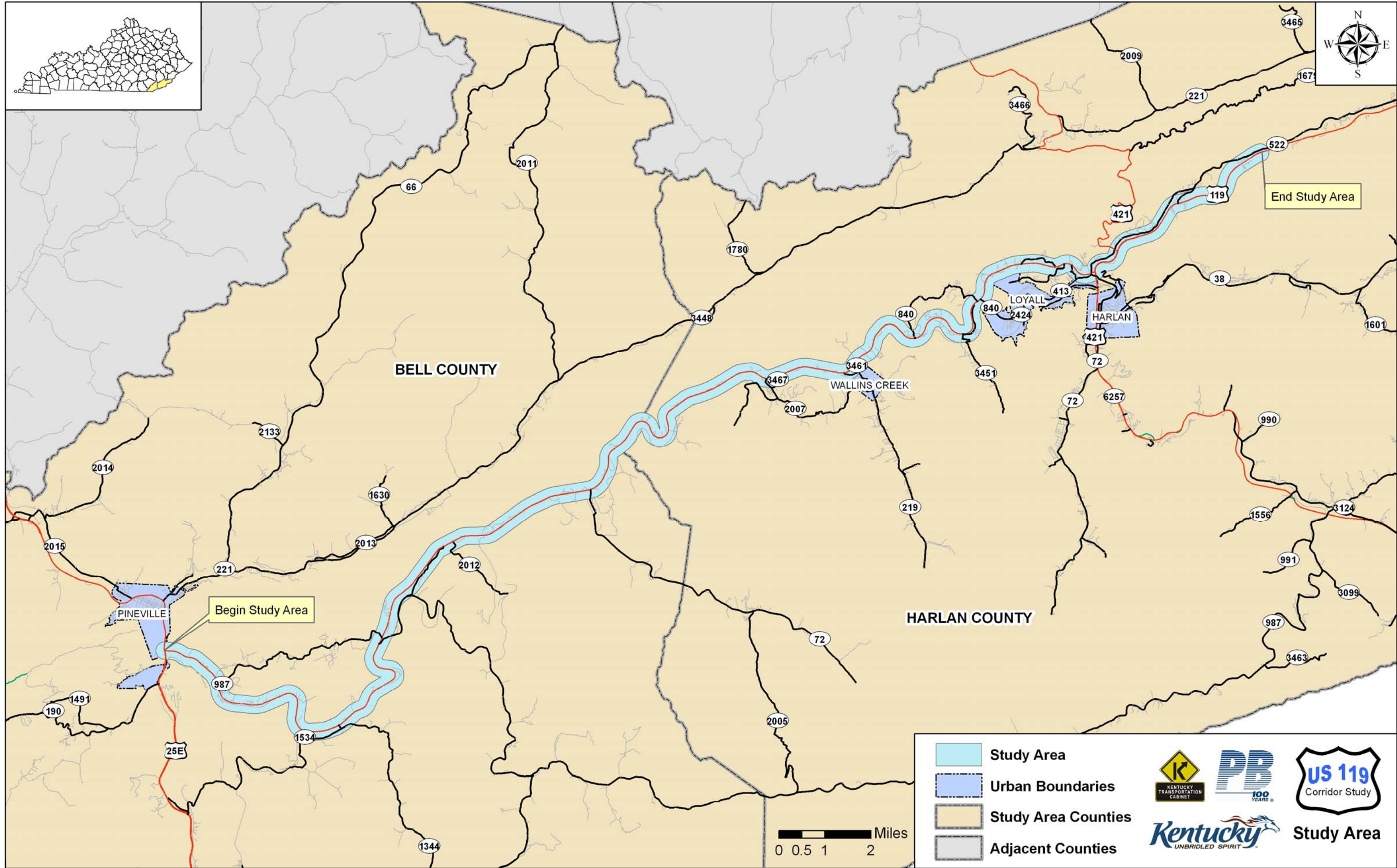
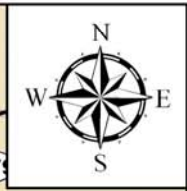
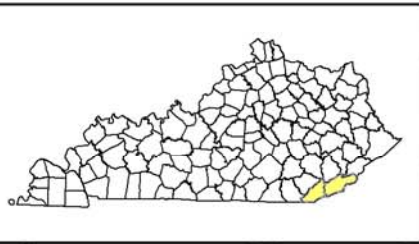
2) Visit each of the four (4) stations and obtain a sticker from a Project Representative. Place the sticker on the appropriate square on the **back** of the comment form.

Study Purpose



- The purpose of this study is to examine the need for and reasonable solutions for improving US 119:
 - From: Bell County (MP 0.0)
 - To: Harlan County (MP 18.0)
- Solutions will focus on long-range / corridor improvements that improve:
 - Safety
 - Reliability
 - Mobility
 - Travel Time





Begin Study Area

End Study Area

BELL COUNTY

HARLAN COUNTY

PINEVILLE

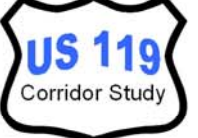
WALLINS CREEK

LOYALL

HARLAN

- Study Area
- Urban Boundaries
- Study Area Counties
- Adjacent Counties

0 0.5 1 2 Miles



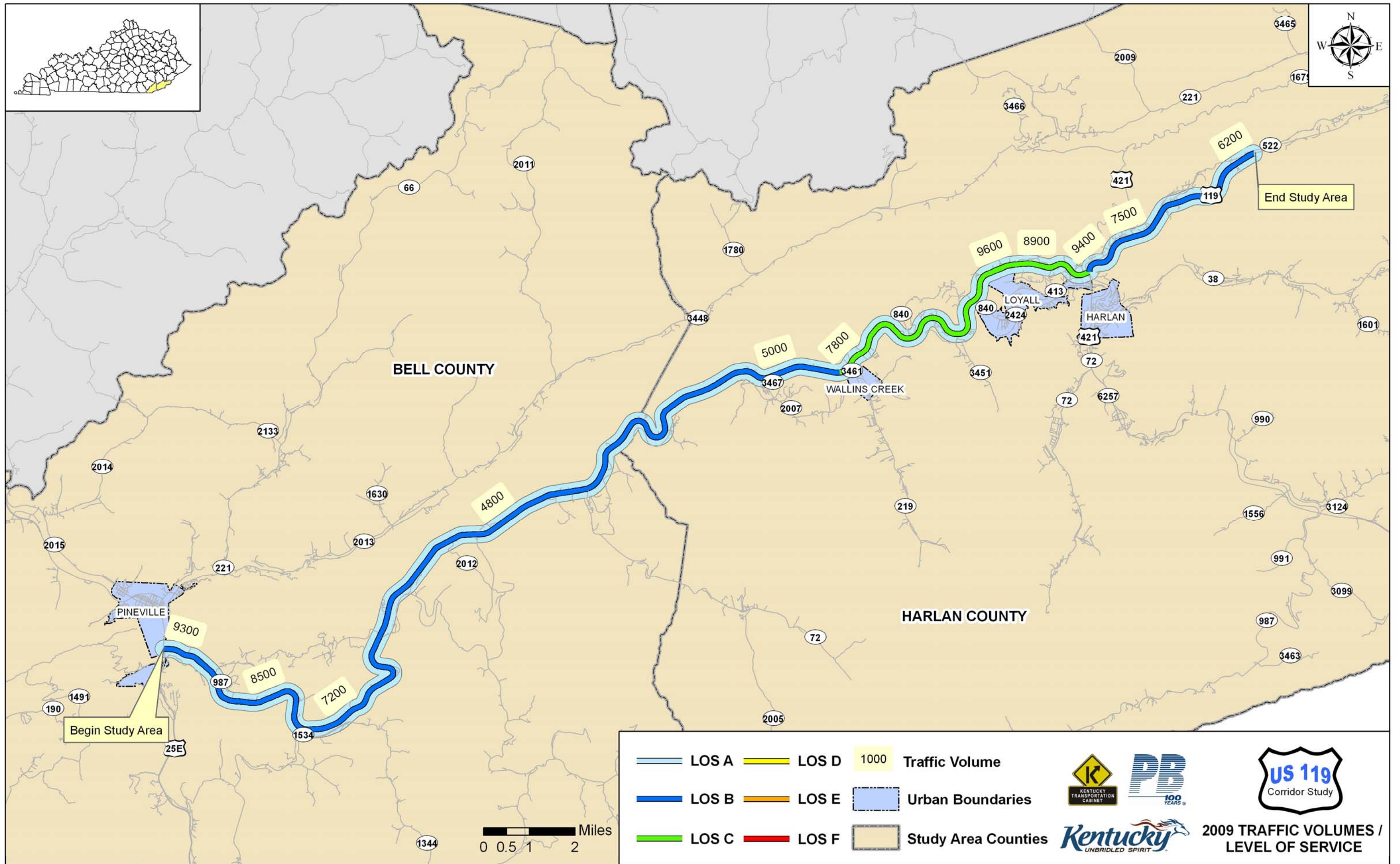
Study Area

Existing Conditions

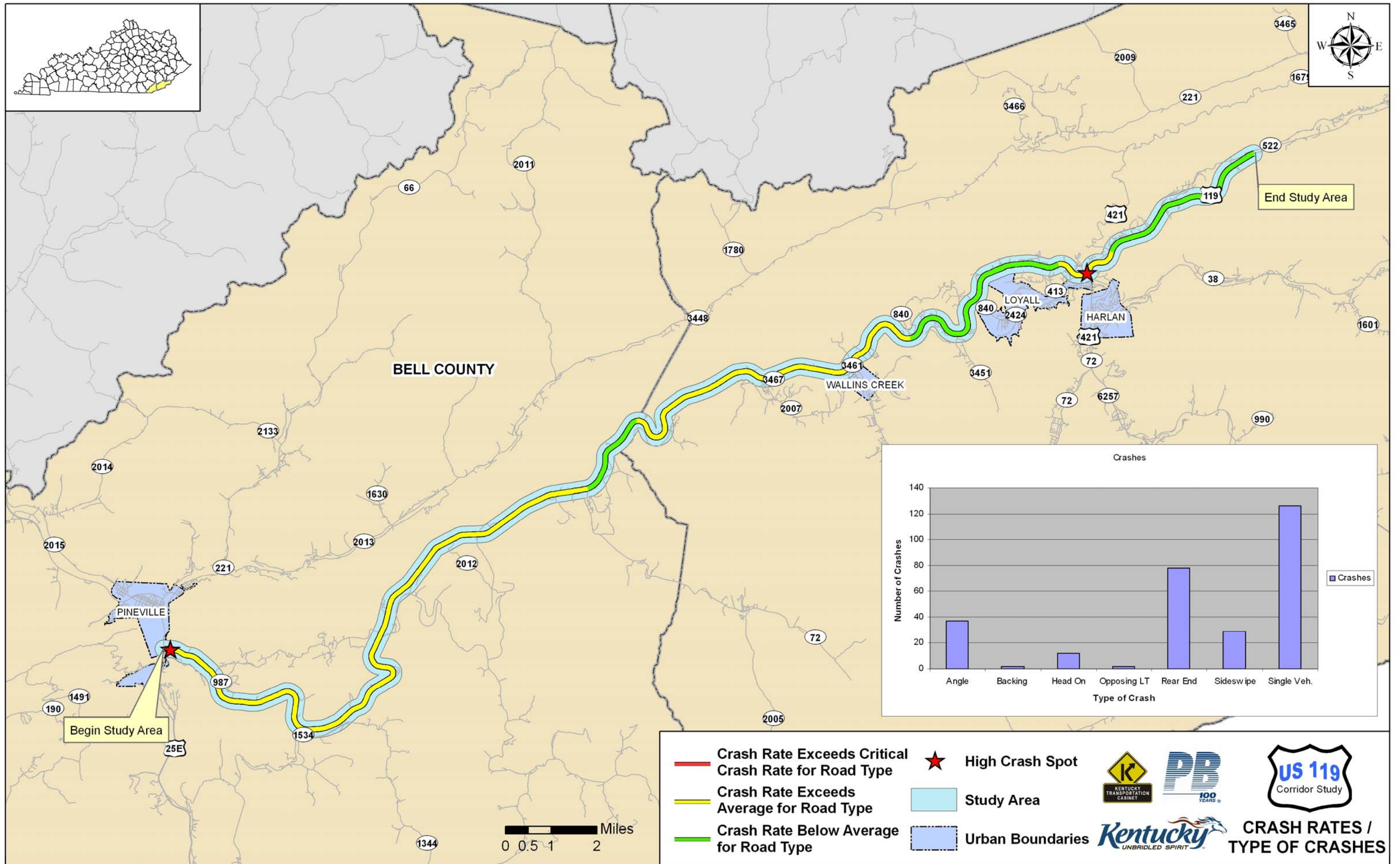


- Highway Geometrics
- Current Traffic Volumes
- Current Level of Service (LOS)
- Crash Analysis
- Environmental Overview

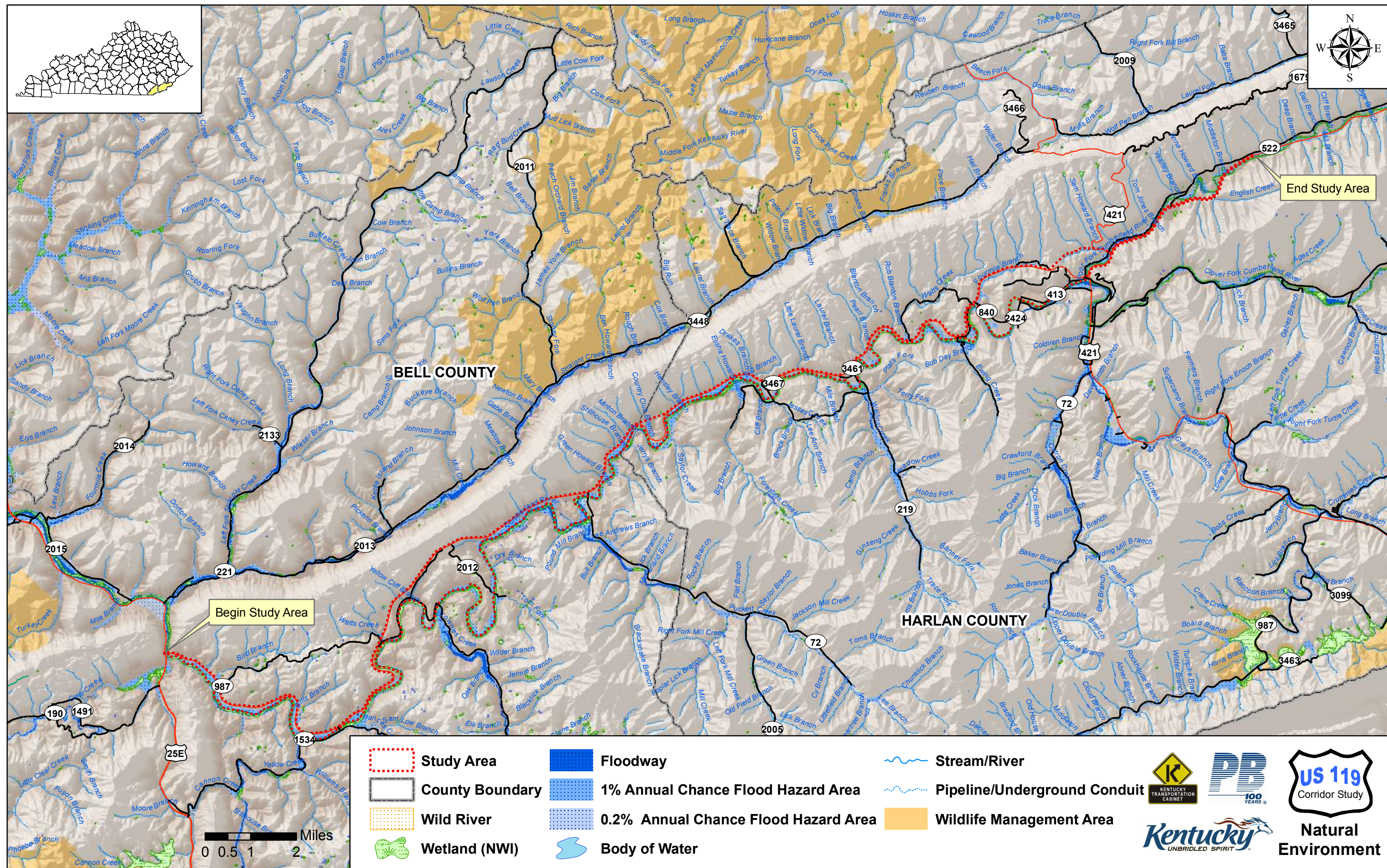




Source: KYTC Highway Information System (HIS); Highway Capacity Software Plus (HCS+) HIGHPLAN Module



Source: KYTC

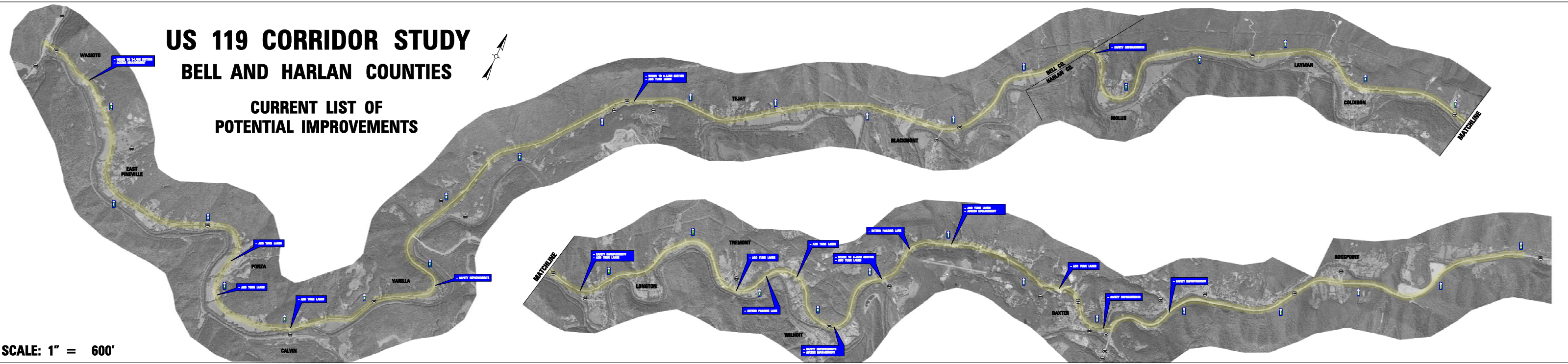


US 119 CORRIDOR STUDY BELL AND HARLAN COUNTIES

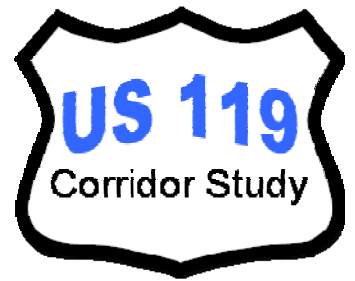


CURRENT LIST OF POTENTIAL IMPROVEMENTS

SCALE: 1" = 600'



Project Issues

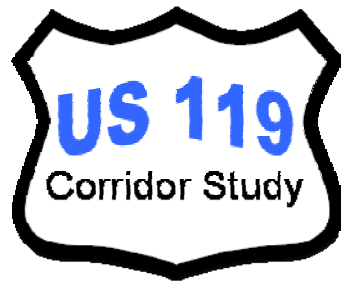


- Issues
 - Mix of Traffic (Local, Through, and Truck)
 - New Harlan County High School Access / Traffic Operations
 - Access Management
 - Sharp Curves
 - Safety / High Crash Locations
 - Family Cemeteries Adjacent to Roadway



Please give us your ideas
on the Comment Form!

Comment Form



**Please Complete Before
You Leave!**

**If You Need Assistance,
See a Project Representative!**

Next Steps



Early January 2010:

Continue developing and analyzing alternatives

Mid-January 2010:

2nd Elected officials and stakeholder meeting

End of January 2010:

Provide recommendations

February / March 2010:

Conclude study